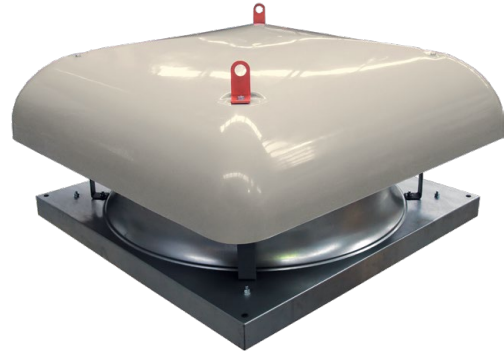


# Roof Mounted Axial Fans – Supply Air

## Application

- o Designed for roof installations, up to a maximum pitch of 15 degrees. They are suitable for wide range of ventilation applications including industrial and commercial requiring small to large air volumes.



## Design

- o Galvanised steel base and UV stabilised cowl.

## Motor

- o TEFC type in 415V three-phase only. Motors are speed controllable using variable frequency control.
- o External rotor motor in 240V single phase & 415V three phase, four and six pole options. Motors are speed controllable.
- o Options include motors complying with Exe, Exd, Exn etc. Standards, no external terminal box supplied for these options.

## Protection

- o Standard motors fitted are IP55. Higher degrees of protection are available as options if required.

## Impeller

- o High efficiency adjustable pitch axial impeller. Impeller options include Aluminium, GRP/Nylon and Anti-static.

## Technical Data & Specification

- o Email [info@blaubergventilation.com.au](mailto:info@blaubergventilation.com.au) for all technical data, fan curves, noise specification or any other information required.